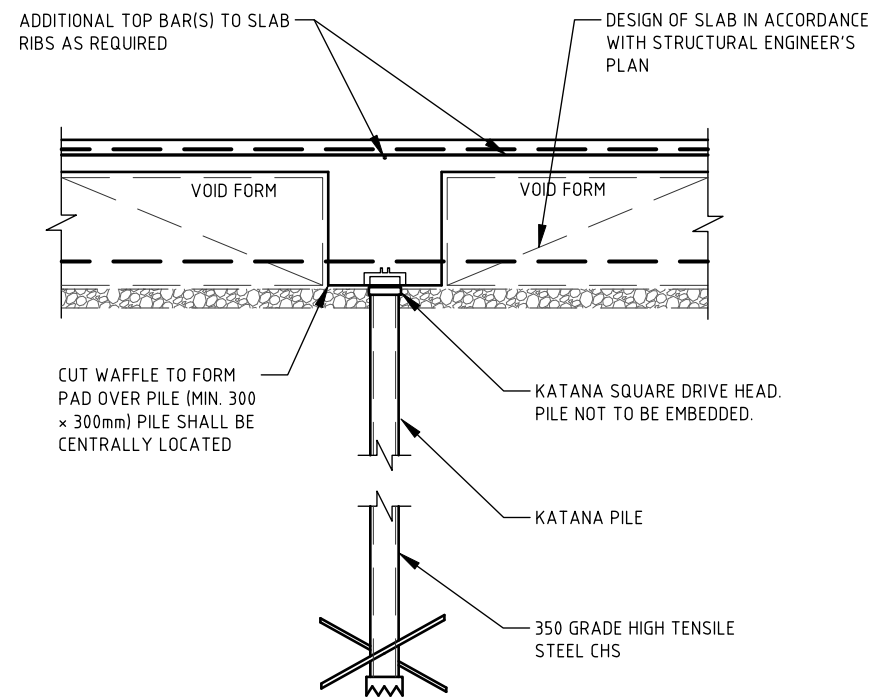


EXTERNAL RIB & KATANA PILE DETAIL (UNENGAGED)

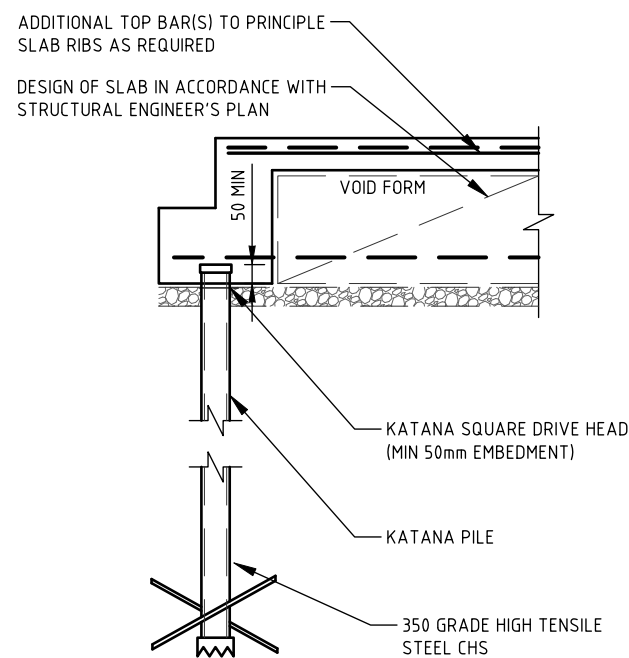
SCALE = 1:20



INTERNAL RIB & KATANA PILE DETAIL (UNENGAGED)

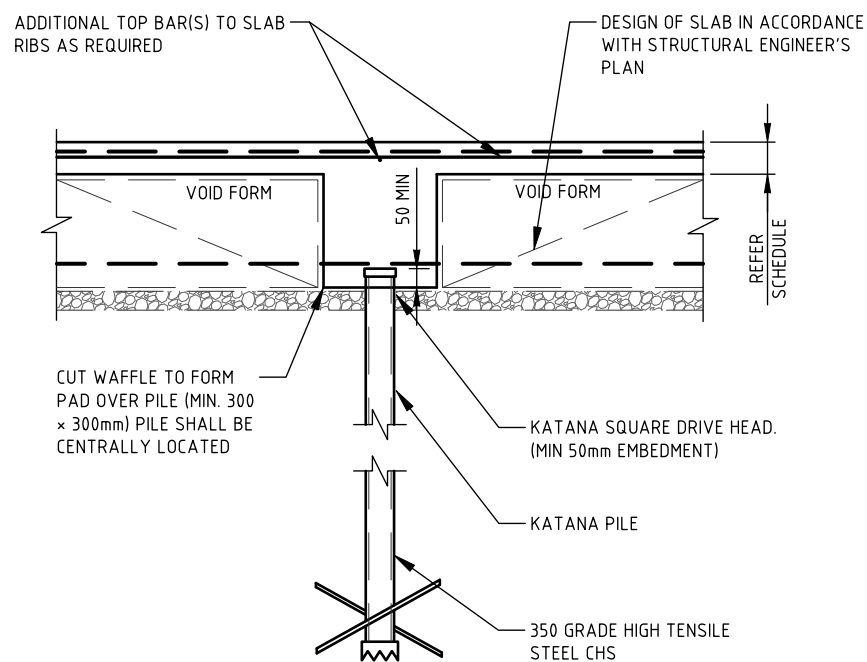
SCALE = 1:20

| PRODUCT SPECIFICATIONS | | | |
|------------------------|----------------------------------|------------------------|------------------------|
| LOAD CAPACITY (KN) | SQUARE DRIVE HEAD (LxLxTHI) (mm) | SHAFT (DIA x THI) (mm) | HELIX (DIA x THI) (mm) |
| 80 | 85x85x16 | 76.1x4.0 | 250x8 |
| 100 | 85x85x16 | 76.1x4.0 | 300x8 |
| 150 | 110x110x20 | 88.9x5.5 | 350x10 |



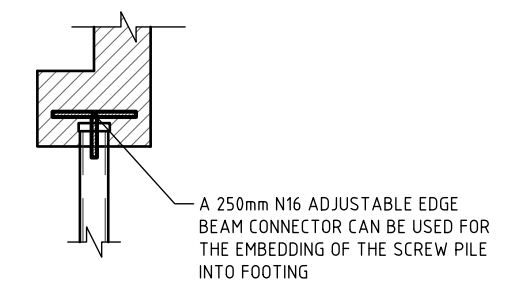
EXTERNAL RIB & KATANA PILE DETAIL (ENGAGED)

SCALE = 1:20



INTERNAL RIB & KATANA PILE DETAIL (ENGAGED)

SCALE = 1:20



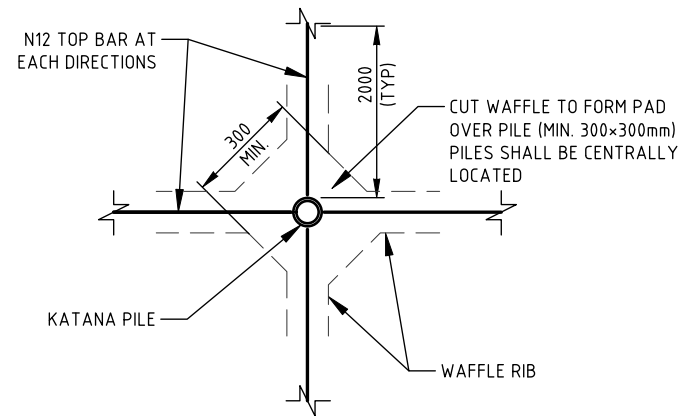
RIB & KATANA PILE DETAIL (ENGAGED ALTERNATIVE)

SCALE = N.T.S

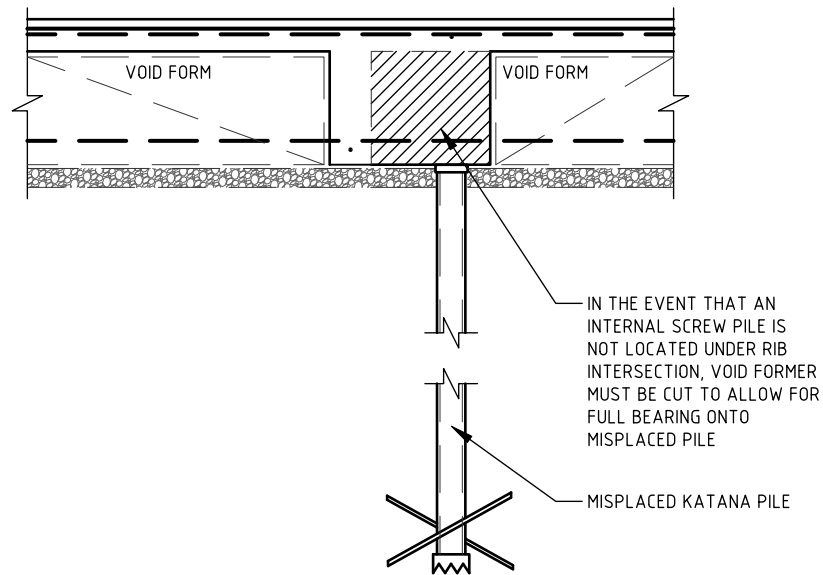
| REV. | DESCRIPTION | DATE: |
|------|--|----------|
| B | ADDED INTERNAL RIB & KATANA PILE DETAILS | 24.04.24 |
| A | PRELIMINARY SKETCHES OF EXTERNAL RIB & KATANA PILE | 21.07.21 |



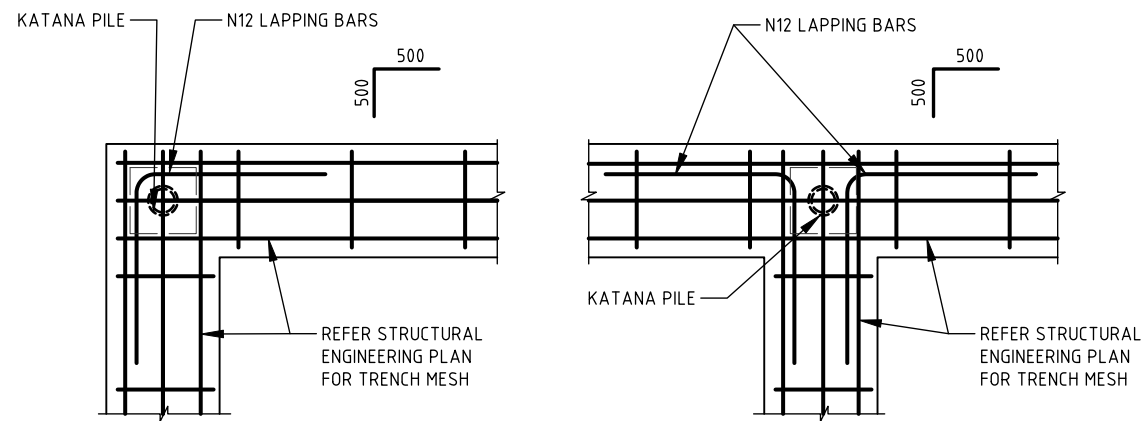
| | | | |
|-----------------|--|------------------|----------|
| DRAWN JL | TITLE Typical Katana Pile Details - Sheet 1 | | |
| CHECKED MA | SIZE A3 | DWG NO KP_001 | REV B |
| SCALE 1 / 20 | | SHEET 1 OF 2 | |



INTERNAL RIB & KATANA PILE PLAN VIEW
N.T.S.



INTERNAL RIB & KATANA PILE DETAIL (MISPLACED)
SCALE = 1:20



RIB INTERSECTION & TRENCH MESH LAPPING PLAN VIEW
SCALE = N.T.S

| REV. | DESCRIPTION | DATE: |
|------|--|----------|
| B | ADDED INTERNAL RIB & KATANA PILE DETAILS | 24.04.24 |
| A | PRELIMINARY SKETCHES OF EXTERNAL RIB & KATANA PILE | 21.07.21 |



| | | | |
|-----------------|--|--------------|------------------|
| DRAWN JL | TITLE Typical Katana Pile Details - Sheet 2 | | |
| | CHECKED MA | SIZE A3 | DWG NO KP_002 |
| SCALE 1 / 20 | | SHEET 2 OF 2 | |